



Delta Junction Winter Trails Challenge



Trail Guide 2026

Delta Junction Trails Association



DJTA Trails Challenge

January - March 2026



Join DJTA for the Delta Junction Winter Trails Challenge. Get out and explore your local trails by hiking, snowshoeing, skiing, or running. Take a selfie at the temporary challenge signs placed on each trail and post to social media with the hashtag #djtatrails or email your photos to deltajunctiontrailsassociation@gmail.com. Log your progress at our website: www.deltajunctiontrails.com (QR code on signs links to our website). Complete the challenge by finding all 6 trail signs, or substitute one trail of your own choice. Individuals that submit their pictures showing they completed the challenge will receive a Winter Challenge sticker and be eligible to win outdoors-related prizes. If you have questions, contact us by email or Facebook messenger.

Safety Considerations

- **Start Easy** - If you are new to winter outdoors activities, start with a couple of easy trails in mild weather.
- **Check the Weather** - Know what the temperature and wind are going to be and plan accordingly. There are good localized weather stations around our area available on the MesoWest weather site.
- **Make a Plan** - Decide where you're going to go, what your mode of exercise will be, know what the daylight hours will be (and carry a headlamp just in case), and estimate how long it will take you. Study maps and/or print out maps in advance in case your electronics fail in the cold weather.
- **Share your Adventure** - It's best not to venture out on the remote trails by yourself, and it's more fun with company.
- **Share your Plan** - Let someone know what your plan is, when you're expected to be back, and what they should do if you don't check in on time.
- **Dress for the Weather** - Layer your clothing and outerwear.
- **Pack the Essentials** - Bring optional gear for your layering system in case it is warmer or colder than expected. Extra gloves, hat and facemask can be good to have along if one set gets sweaty or something gets lost. Bring water and/or something hot to drink (you might not feel like drinking water, but your body needs it in Alaska's dry Interior). Include snacks that don't get too hard when frozen. Don't forget your first aid kit.



2026 Challenge Summary

Challenge yourself by finding all the trail signs!

Trails included in the challenge:

1. Liewer Community Trail

Difficulty: Easy

Distance: 1.2-mile loop

2. River Walk Park

Difficulty: Easy

Distance: about 1.75 - 2 miles to cover each trail segment at least once.

3. Bluff Cabin Trail

Difficulty: Moderate

Distance: about 3.5-4.0 miles round trip (RT) to sign, but there are many distance options available on this trail network. Look for the sign near the rock overlook site.

4. Lisa Lake Trail

Difficulty: Easy

Distance: about 1.4 miles RT to the lake.

5. Quartz Lake Loop Trail (Quartz Lake SRA)

Difficulty: Moderate - Difficult

Distance: 1.8-mile loop to Glatfelder cabin and Lost Lake Rd. The sign is mid-way on the loop. Look for it on the ridge between the Cabin and Lost Lake.

6. Greely Bluff Trail

Difficulty: Easy

Distance: about 0.4-mile between the 2 trailheads.

7. Choose your own Trail

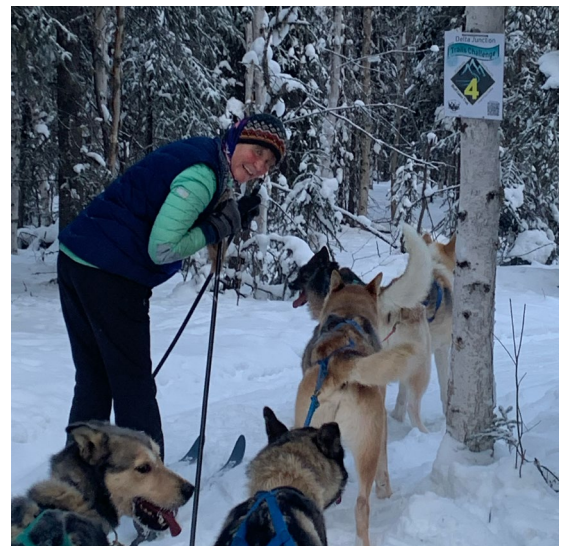
Use this option to travel your favorite Delta area trail not included in the six listed trails. Let us know the name and/or a description of where it is, along with your selfie and the approximate distance you traveled.

See individual trail pages for more information and maps.



Trail Etiquette

- **Groomed Trails** - On the Liewer Trail and River Walk Park trails, skiers, walkers, and pets are all welcome and asked to respect the trail and not walk on the ski tracks set for classical skiing. Pack out animal waste or throw scat off the trail. Fat bikes are welcome once grooming has set up and you are not leaving ruts.
- **Yielding** - Many of our local trails are multi-use. There may be a yield sign at or near the trailhead to show you who yields to whom. Courtesy and common sense always apply. Typically you should yield to the passerby who has least stopping control. Always yield to dog teams and horses and give the animals plenty of space. If you have a dog with you, be sure to keep it under control. Hikers can usually step aside more easily than other users.
- **Multi-Use** - Motorized trail users should slow speeds when encounters are possible. Non-motorized users should wear something reflective and have a headlamp. You should usually be able to hear when motorized users are approaching and get as much off the trail as possible.
- **Pets** - If you bring along your furry friends, remember that there could be trapping near any trails. You should be prepared by knowing how to release a pet from a trap, and by bringing appropriate pet items such as a leash, booties and snacks.
- **Our trails** are user maintained. Please do your part to help keep them in good condition. If you enjoy these trails and the winter challenge, please consider volunteering or donating to Delta Junction Trails Association.



#1 Liewer Community Trail

You can find this trail right in the heart of Delta, located off Nistler Road. Park at the Junior High School parking lot and look for the Kiosk at the start of the trail. The challenge sign is posted somewhere along the trail.

Come out and enjoy this non-motorized 1.2-mile groomed low lighted trail. Winter lights are available 3-9pm by pushing the button on the back side of the kiosk. Bring a headlamp just in case (if the lights are already on, you won't know how much time is left before they shut off).



Difficulty: Easy



#2 River Walk Park

Just north of Delta at MP 267 of the Richardson Highway are Delta's newest trails at River Walk Park. Access to this park is directly across the highway from the city airstrip. A new road was constructed in 2022 that leads to a lower parking area away from the biomass burn area. Another access road curves up to the trail head, but it may not be plowed for vehicles. Watch for directional signs once you turn off the highway.

These trails are perfect for skiing in winter (watch our Facebook page for grooming updates). Look for the sign somewhere on the trail network.

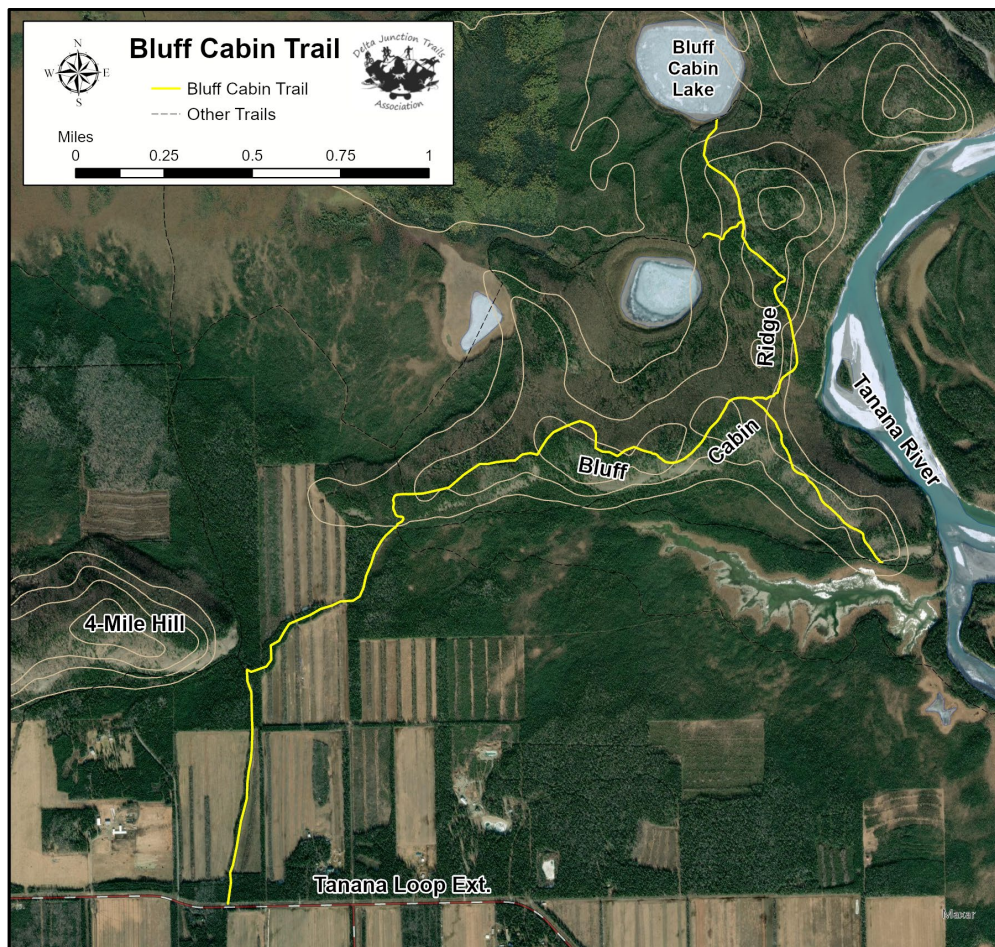


Difficulty: Easy

#3 Bluff Cabin Trail

The Bluff Cabin Trail is suitable in winter for snowshoes, skis, dog sleds, fat bikes or snow machines. This trail is usually kept packed down by snow machines heading to the Bluff Cabin Lake (stocked by ADFG). Look for the trail challenge sign near the lookout rock, about 3.5 - 4.0 miles round trip. It is 7.2 miles to the main Bluff Cabin Lake and back.

From the Richardson Highway north out of town, turn right onto Tanana Loop Road. In 1.25 miles, turn right onto Tanana Loop Extension. The trailhead is 2.2 miles on the left. If it has just snowed, you may need 4-wheel drive to park, but DJTA is keeping the parking area plowed.



Difficulty:
Moderate
- Difficult
due to
steepness



#4 Lisa Lake Trail

The trail to Lisa Lake begins at the double-ended paved parking area 41 miles southeast of Delta Junction at MP 1381.1 of the Alaska Highway. This is a state Alaska Department of Fish and Game stocked lake, and the state DOT usually keeps the parking area plowed. The challenge sign is located somewhere before the trail splits to go either way around the lake. Round trip distance to the lake is about 1.4 miles.

Skiing, snowshoeing, or hiking are all possibilities for this trail depending on when the last time a snowmachine ran the trail and how much it has snowed.



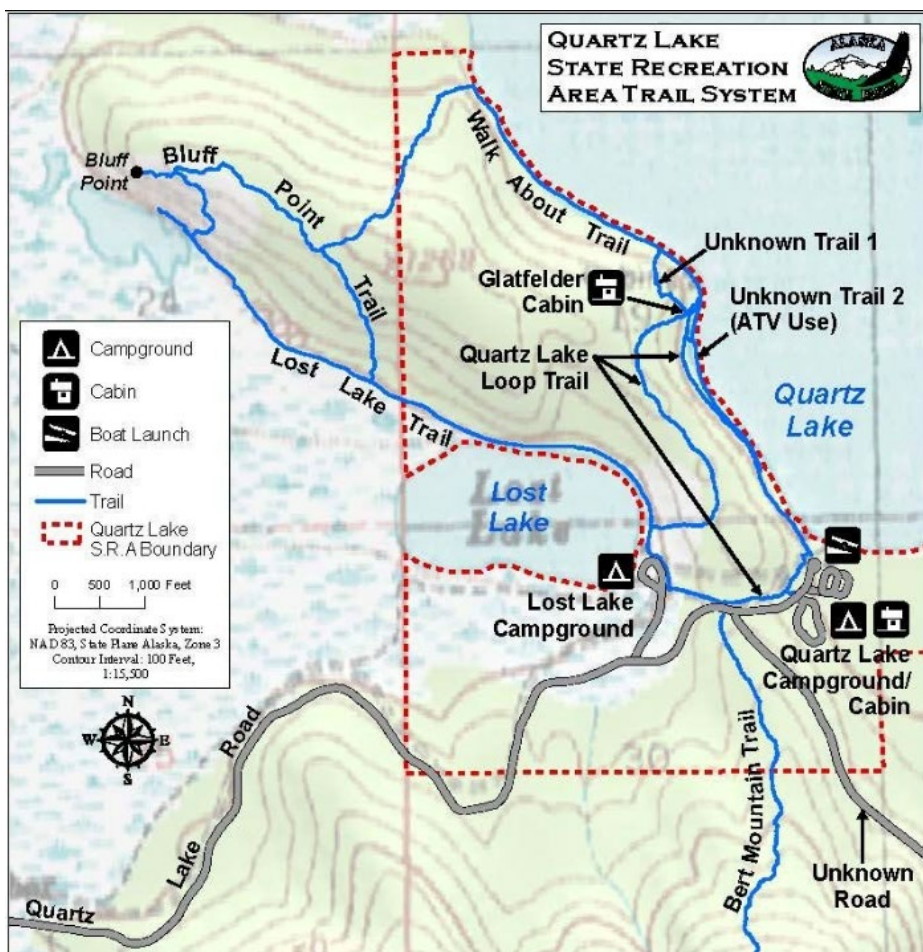
Difficulty: Easy

#5 Quartz Lake Loop Trail

Quartz Lake SRA

This trail starts at the main parking area and runs out to the Glatfelder Cabin, then over the ridge to the Lost Lake campground access road. From there follow a trail back to the parking area. There are several trails in the area, but you should be able to follow the map below. The challenge sign is located somewhere between Glatfelder and Lost Lake.

Snowshoes might be needed depending on how many people have made the trek and how much it has snowed. Skiing the entire loop would require advanced skill level.



Difficulty:
Moderate
- Difficult
due to
steepness
and trail
conditions

Quartz Lake State Recreation Area Map from <http://dnr.alaska.gov/parks/aspunits/northern/pdfs/quartzlakeguide.pdf>



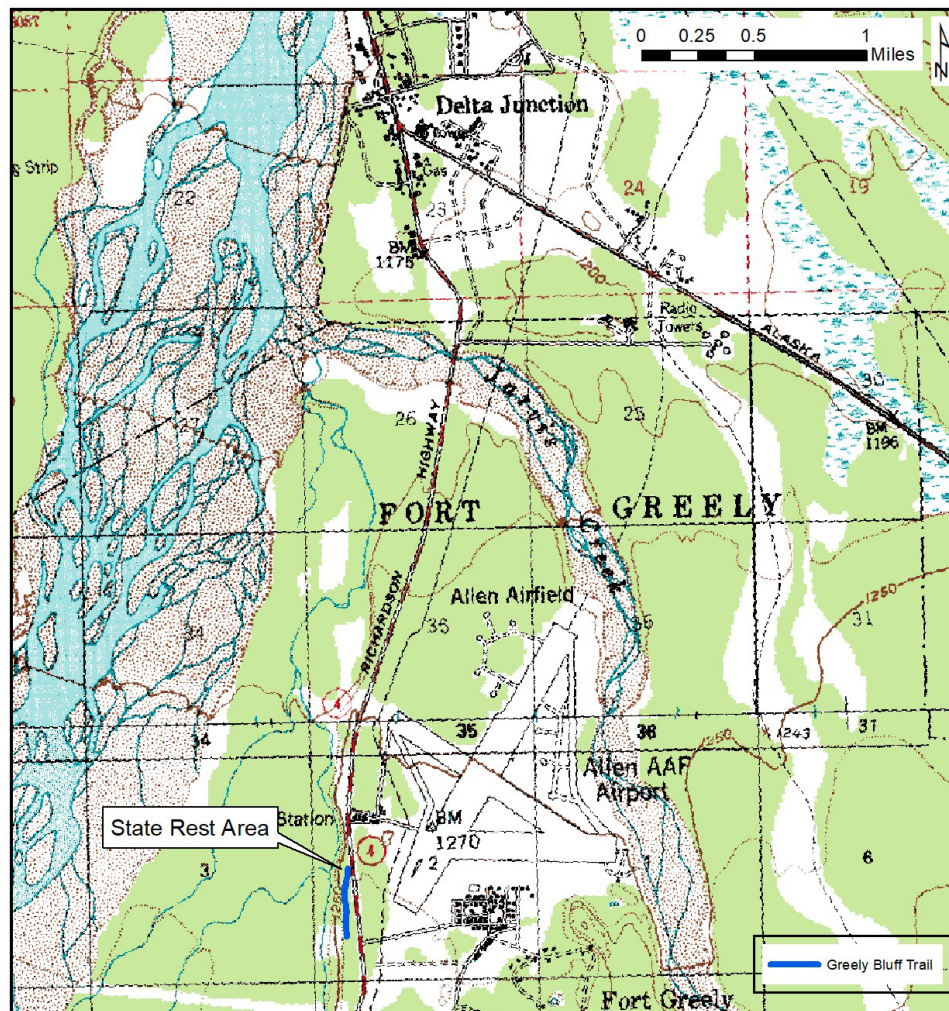
#6 Greely Bluff Trail

Richardson Highway Overlook



This is a narrow walking path that connects the state rest area south of Delta to an Army overlook about 0.4 mile south. The trail has a hiking trail sign at each end and runs parallel to the bluff that overlooks the Delta River and the Alaska Range. Park at the state rest area (mile post 262.6) about 3 miles south of Delta Junction. Access the trail across the snowplowed berm nearer the outhouses.

Snowshoes may be needed depending on how packed down it is and how much snow and drifting has happened. Skis are not recommended.



Difficulty:
Easy

This trail is listed in the Salcha-Delta SWCD Deltana Trail Guide Map 4, Greely Bluff.