



RTCA helps partners give their communities something to “Last a Lifetime”

October 1, 2014 – September 30, 2015

The National Park Service – Rivers, Trails and Conservation Assistance Program, also known as **RTCA**, announces its outdoor recreation and conservation projects in the Alaska Region for the upcoming fiscal year. Communities can grow from a seed of an idea. RTCA will help communities take their Ideas and turn them into Action!

RTCA looks forward to working with the following communities on these exciting continuing and new projects.

Delta Junction Community Trails

- Develop a community-wide trail system and trail organization to encourage healthy lifestyles, tourism, and enhanced public safety while protecting public access to trails, land, and water.
- *Initial Partners:* Delta Junction Trails Association, City of Delta Junction, Delta Greely School District, Alaska State Parks, Deltana Fair Board, the Salcha/Big Delta Soil and Water Conservation District

Fairbanks Peirce Park

- Create the Peirce Park Living Lab – a place where community, stewardship, and science education meet, where students and community members have opportunities to learn and apply science, engineering, math, and the arts in a natural setting.
- *Initial Partners:* Effie Kokrine Early College Charter School, Fairbanks North Star Borough, Gates of the Arctic/Yukon Charley National Park and Preserve, NPS Arctic Inventory and Monitoring Program, University of Alaska Fairbanks, One Tree Alaska, University Park Elementary, Bureau of Land Management, U.S. Fish and Wildlife Service, Tanana Valley Watershed Association, American Society of Landscape Architects (Bettisworth North Architects and Planners), Craig Cheledinas, and Mercedes Culliton

Homer Poopdeck Platt Park

- Develop the Kachemak Heritage Land Trust’s Poopdeck Platt Park into a place of community pride recognized by all as a living example of how conservation connects people and the land.
- *Initial Partners:* Kachemak Heritage Land Trust, American Society of Landscape Architects (Nancy J. Casey Inc., DOWL HKM)

Homer Woodard Creek Coalition

- Re-establish Woodard Creek as a prized community asset that will enhance conservation efforts, promote recreational outlets, protect against flooding hazards and enhance the quality of life for residents and tourists alike.
- *Initial Partners:* Homer Soil and Water Conservation District, the City of Homer, Homer Parks and Recreation Advisory Commission, Cook Inletkeeper, Pratt Museum, Homer Council on the Arts, Bunnell Street Art Gallery, Friends of Woodard Creek KHP, and Kachemak Bay Conservation Service

Anchorage Youth Connections

- Strategically expand the Anchorage Park Foundation’s Youth Employment in Parks (YEP) program to design and implement conservation projects such as trails and habitat restoration in neighborhoods of need.
- *Initial Partners:* Anchorage Park Foundation, the Municipality of Anchorage, Alaska Geographic, Get Outdoors Anchorage, US Fish and Wildlife Service, Anchorage Waterways Council, Great Land Trust, The Nature Conservancy

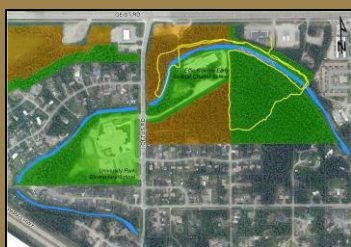


Photo Credit: Cook Inletkeeper



For more information see:

<http://go.nps.gov/alaska/rtca>